



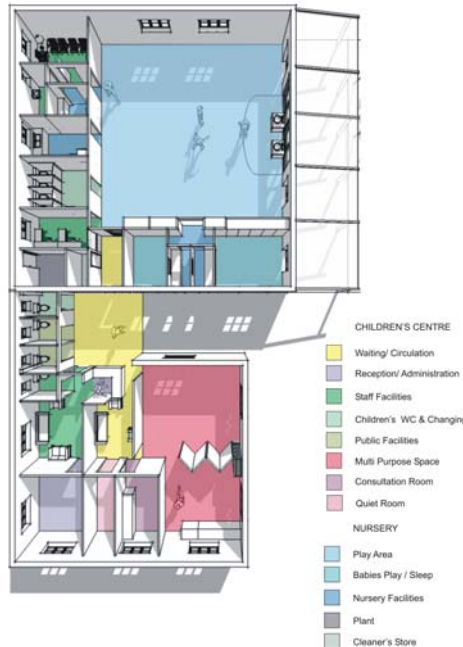
# vision

## Children's Centres Strategy

Client : Cheshire County Council

Value: Approx £10m

Programme: Nov 2005 - March 2008



## Project Profile

Following on from the successful completion of four Phase One Children Centre projects, TNW were commissioned by Cheshire County Council Property Management Services and Cheshire Sure Start in November 2005, to develop a strategic programme for Cheshire element of Phase Two of the Government's Sure Start initiative to provide Children's Centres for every community. The requirement in Cheshire was for a further 23 Children's Centres to be operational across the county by March 2008.

TNW were appointed to develop a strategy for the design and delivery of each of these 23 facilities, responding to the individual circumstances of each specific Centre, within the overall programme. The scope of work comprised:

- cost advice for each model, with consideration of new-build or refurbishment.
- a standardised accommodation schedule
- select the appropriate model for use at each location
- define an approximate design and construction periods
- outline total construction cost and programme for the Phase 2 capital programme.

Each Centre would provide an environment for children, parents, and staff that was calm, uplifting, safe and attractive, but also efficient, tough and flexible. Sure Start services provide information, advice and support to parents along with early years provision, health services, family support, parental outreach and employment advice for disadvantaged families. The services required would vary with the need of each community.

Subsequently, TNW were appointed as lead designer to develop nine feasibility studies to live projects. These were Manor Park, Wyche, Lache & Handbridge, Chester Victoria, Chester Kingsway, Tarvin, Hartford (to planning stage only), Greenfields, and Ashgrove.